

Setting Course

47th Edition

VOLUME #1 SPRING 2010 ISSUE

Proudly Presented By HMY Yacht Sales, Inc.

**HMY IS YOUR NEW GRAND BANKS
DEALER FOR FLORIDA'S EAST COAST!**



Grand Banks 59' Aleutian

HMY



hmy.com

WE'VE GOT THE POWER!



In business since 1977.



Complete Yacht Service and Repairs.

- Engine Repower and Overhaul
- Custom Carpentry
- Cockpit Extensions
- Fiberglass Repairs
- Refinishing Specialists
- Dockside Service
- Bow Thrusters / Stabilizers
- 40 / 80 / 100 Ton Capacity Lifts
- Undercover Dockage Available

www.CableMarine.com

Cable Marine *East Yard* 954-462-2822 • 1517 S.E. 16th Street, Fort Lauderdale, Florida 33316

Cable Marine *West Yard* 954-587-4000 • 2491 W. State Road 84, Fort Lauderdale, Florida 33312

We service yachts from 25 feet to 125 feet.

Interlux
yachtpaint.com

WESMAR

PETIT
Simply better.

HMY Yacht Sales Owner
Steve Moynihan



Greetings from the bridge!

We are pleased to announce our appointment by Grand Banks as their new authorized dealer for the east coast of Florida. Effective just in time for the 2010 Miami Boat Show, HMY will represent all three of the Grand Banks lines: Aleutian raised pilothouse motoryachts, the Eastbay downeast series and the Heritage trawler series. We will have immediate inventory of a new 41EU, which is a spacious two stateroom Zeus pod-drive cruiser from the Heritage series. On order are the brand new 53 Aleutian, a 46 Eastbay and a 41 Heritage. HMY looks forward to meeting each and every one of the many satisfied Grand Banks owners cruising our waters!

We will have staff available at the Grand Banks display during the Miami Boat Show. Additionally, HMY staff will be present at all of the other manufacturers we represent. Viking Yachts will unveil to the world their spectacular new 76' Enclosed Bridge Convertible. Viking Sport Cruisers will have five models on display adjacent to our brokerage display on the 5200 block of Collins Ave. Riviera will be at their NEW location just a little south of our display opposite the Fountainebleau Hotel. The Tiara display will be located at the Convention Center and they will be introducing their latest model, the 4300. All but two of Tiara's extensive line-up will be displayed indoors this year including their largest, the 5800 Sovran as well as the 4800 Convertible. We will have 4 new Tiara models available at our brokerage display on Collins Ave: 5800 Sovran, 4800 Convertible, 4300 Sovran and the 3900 Open.

Plans are underway for a series of fun-filled family events that we are sure you'll want to be part of: Our annual Billfish Blast will be held at Abaco Beach Resort May 31st-June 4th. We also plan to bring back our summer cruise in the Bahamas, the HMY Great Escape! Tentative dates are June 30th-July 6th for this multi-island event. Finally, the HMY-Viking Yachts Megadock Tournament in Charleston, SC will be held July 7th-10th this year. Additional information about all HMY sponsored events is available on our newly designed website:

www.hmy.com.

To ensure that you are receiving all of our latest news, special sales promotions, event information and other happenings at HMY. Please take the time to register your email address on our website.



Setting Course

HMY Yacht Sales, Inc.

Owner:

Stephen Moynihan

Chief Financial Officer:

Larry Thomas

Editor-In-Chief/Graphic Artist:

Anne Tacon

Director of Marketing:

Julio DeCastro

Staff Photographer:

Charlie Clark

Printing:

Quality Printing 800/771-1142

SETTING COURSE is published by HMY Yacht Sales, Inc., 817 N.E. 3rd Street Dania Beach/Ft. Lauderdale, FL 33004. Literary contributions are welcome. Free subscriptions are available by calling 561/799-9590 or email: atacon@hmy.com.

CIRCULATION: 15,000. **DISTRIBUTION:** Direct mailing to HMY customers and potential customers, yacht brokers and yacht dealers, marinas, banks, lending institutions, insurance underwriters, surveyors and other marine magazines as well as hand distribution at major boat shows, events and select marinas.

ADVERTISING: Advertising accepted if it is in the best interest of the readers and the publisher. Rates upon request by calling 561/799-9590. Copyright by HMY Yacht Sales, Inc. Neither HMY, or its editor shall be held responsible for any errors or inaccuracies. ©2010 HMY Yacht Sales, Inc.

WRIGHT'S HELICOPTER SERVICE
DREW & JULI WRIGHT

AERIAL PHOTOGRAPHY & FLIGHT SERVICES
STUDIO & CUSTOM FRAMING
CYPRESS LANDING
14100 S.W. CONNERS HWY.
OKEECHOBEE, FL 34974
Phone/Fax: 772-597-1027

wrightsaerials.com



GRAND BANKS YACHTS

HMY is proud to announce our appointment as the new Authorized Dealer selected to represent Grand Banks Yachts on Florida's east coast.

"We're extremely pleased to be working with HMY, one of the top sales groups in this industry," said Grand Banks President and CEO Rob Livingston. "HMY brings tremendous expertise, integrity and customer commitment to their work. GB owners and buyers can expect nothing but the best by this appointment."

Since 1956, this luxury builder has built yachts of superior quality that have become industry hallmarks and earned a loyal following around the world. Renowned for their handmade craftsmanship, distinctive good looks, as well as tried and true all-weather capabilities, Grand Banks Yachts continue to be the choice of discerning boaters today.

Grand Banks Yachts are known and appreciated for their intelligent design, consummate balance of size, shape and lines that create both functional efficiency and a graceful appearance. From their layout proportions, to their bright interiors, to their rational running systems, each model gives her owner a finely tuned sensation of comfort, style and sensibility.

Grand Banks offers a choice of models in three distinctive series, the Heritage, Eastbay, and the Aleutian. Each model seeks to capture the spirit of a nautical ideal and combine it with state-of-the-art equipment, meticulous craftsmanship, and superior construction techniques. The end result is an unparalleled cruising experience, and the genuine joy of owning a Grand Banks.

Each vessel is well appointed and outfitted, and backed by one of the industry's best after-sales support programs. All models are built to the rigorous standards that have made Grand Banks among the most sought-after marquees for over 50 years! Coupled with HMY's 30 year tradition of excellence, integrity, service and support in the boating industry, ensures that Grand Banks' customers will benefit by the combined expertise of more than 80 years!

Since 1979, HMY has represented the finest yacht manufacturers in the World. HMY provides their customers with a dedicated and knowledgeable staff of sales and service professionals. HMY also offers all the resources necessary to make the purchase or sale of our clients' new and used yachts a positive experience.

Steve Moynihan, owner and founder of HMY Yacht Sales states, "The addition of Grand Banks to our collection of the finest fishing and family cruising yachts on the water provides HMY customers an even broader selection of premier yachts to choose from." "Whether you're a tournament fishing enthusiast, an island hopping cruiser or an extended cruiser and live aboard, you'll find just the right yacht for your particular interests at HMY Yacht Sales."

Visit one of HMY's 6 Florida waterfront locations to learn more about Grand Banks Yachts or visit our website at www.hmy.com.

HMY YACHT SALES LOCATIONS:

NEW MIAMI LOCATION!: 305-856-8486 • Dania/Ft. Lauderdale 954-926-0400
North Palm Beach 561-799-9590 • Palm Beach Gardens 561-775-6000
Stuart 772-692-7900 • Jacksonville 904-221-2228

REDESIGNED. REDEFINED. REVOLUTIONIZED.

See the 41 Heritage EU at the 2010 Miami Yacht & Brokerage Show



It's just what you've been waiting for: timeless design, expertly matched with breakthrough innovation. A cruising yacht that can sip fuel for hundreds of miles, or speed you across the horizon at 25 knots. A boat that handles a tight slip as confidently as a tall sea, that impresses with style and luxury as much as her practicality. And above all a Grand Banks, with all the quality and reliability our name has symbolized for over 50 years. The remarkable 41 Heritage EU – with Zeus propulsion, joystick docking and a stunning set of standard features. So what are you waiting for?

Grand Banks is proud to be represented by HMY Yacht Sales at six locations along the east coast of Florida



CRUISE. OR FISH. OR BOTH.
THE ALL NEW TIARA YACHTS 4300 OPEN

EXCLUSIVE PREMIERE SHOWING
2010 MIAMI INTERNATIONAL BOAT SHOW
FEBRUARY 11-15 – BOOTH B24



©2010 TIARA YACHTS

4300/3900/3600 IPS/3200/3000 OPEN
TIARA TOURNAMENT SERIES (TTS)
4800/3900 CONVERTIBLE
5800/4300/3900/3500 SOVRAN™

www.tiarayachts.com
hmy.com

TIARA

YACHTS

MIAMI 305-856-8486
 FT LAUDERDALE 954-926-0400
 N PALM BEACH 561-799-9590
 PALM BEACH 561-775-6000
 STUART 772-692-7900
 JACKSONVILLE 904-221-2228
 CHARLESTON 843-577-3470



If you are looking for a new Tiara anywhere from Key West through Jacksonville, FL ...HMY Yacht Sales is the place to go!



IN STOCK!

2010 5800 Sovran
 Triple Volvo IPS 600 Diesels with Joystick control.



IN STOCK!

2010 4800 Convertible CAT power,
 factory hardtop, molded steps to flybridge.

**THE ALL NEW
 4300 OPEN
 IS NOW
 AVAILABLE!**



IN STOCK!

2010 4300 Sovran
 Twin Volvo IPS 600 Diesels with Joystick control.



IN STOCK!

2009 3900 Open
 Cummins power, cruise rigged, spacious layout.

**OTHER TIARA MODELS AVAILABLE FOR ORDER:
 SOVRAN SERIES 3900 • 3500 • CONVERTIBLE 3900 OPEN SERIES 4300 • 3600 • 3200 • 3000**

SELECT PRE-OWNED TIARA YACHTS:



"EAGLE POINT" 52' 2004 TIARA SOVRAN
 3406 CATs, beautiful cherry wood interior,
 EXTENSIVE EQUIPMENT LIST!
 See full specs & photos at hmy.com



"MERRYACHT" 42' 2007 TIARA OPEN
 Low hours on QSM11 Cummins, METICULOUSLY
 MAINTAINED! UPGRADES GALORE! MUST SEE!



"HIGH COTTON" 41' 2000 TIARA
 435hp CATs. GREAT CONDITION THROUGHOUT!
 See full specs & photos at hmy.com



"CURRENT AFFAIR" 41' 1998 TIARA OPEN
 Low hours on 435hp CATs, WELL EQUIPPED TO
 FISH OR CRUISE & READY TO DO BOTH!



"MOONDANCE" 40' 1998 TIARA
 3208TA CATs with 500 hours, 2 stateroom lay-
 out. OWNER MOTIVATED! BRING OFFERS!
 See full specs & photos at hmy.com



"SEA DOODLE" 36' 2004 TIARA SOVRAN
 Twin 480hp Cummins, blue hull, LOTS
 OF UPGRADES!



"MARTINI EXPRESS" 36' 2006 TIARA OPEN
 Low hours on 380hp Cummins, helm A/C &
 full aft enclosure. LIKE NEW!



"ANDIAMO" 36' 2006 TIARA SOVRAN
 Twin 490hp Cummins w/only 80 original hours!
 She is the last of the 36's! LOADED!
 METICULOUSLY MAINTAINED! LIFT KEPT!

www.hmy.com

HMV Yacht Sales is the largest stocking dealer for new Viking Yachts!



VIKING MODELS AVAILABLE:

**82' CONV. & ENCL. BRIDGE • 76' CONV. & ENCL. BRIDGE •
68' CONV. & ENCL. BRIDGE • 64' CONV. & ENCL. BRIDGE • 60' CONV. & ENCL. BRIDGE
57' CONVERTIBLE • 54' CONVERTIBLE • 52' SPORT YACHT/EXPRESS
50' CONVERTIBLE • 46' CONV. & EXPRESS • 45' CONVERTIBLE**



VSC MODELS AVAILABLE:

**75' FLYBRIDGE MOTORYACHT
70' FLYBRIDGE MOTORYACHT
63' FLYBRIDGE MOTORYACHT (shown)
58' FLYBRIDGE MOTORYACHT
V58 EXPRESS**

HMV Yacht Sales Locations:

**NEW MIAMI LOCATION!: 305-856-8486 • Dania/Ft. Lauderdale 954-926-0400
North Palm Beach 561-799-9590 • Palm Beach Gardens 561-775-6000
Stuart 772-692-7900 • Jacksonville 904-221-2228 • Charleston 843-577-3470**

MIAMI 305-856-8486
 FT LAUDERDALE 954-926-0400
 N PALM BEACH 561-799-9590
 PALM BEACH 561-775-6000
 STUART 772-692-7900
 JACKSONVILLE 904-221-2228
 CHARLESTON 843-577-3470



BROKERAGE VIKING YACHTS & VIKING SPORT CRUISERS



"HYDROTHERAPY" 75' 2005 VIKING SPORT CRUISER
 C-32 CATs, four stateroom/4 head layout plus crew quarters & crew head. ABSOLUTELY BEAUTIFUL WITH ALL THE AMENITIES!
See full specs & photos at hmy.com



"NICE N EASY" 74' 2007 VIKING SF
 2400hp MTUs w/chrome engine pkg. This 40 knot Viking has it all! teak deck, 4/4 + day head layout. She serves as a tender to a large M/Y so she has been LIGHTLY USED! PRISTINE THROUGHOUT!



"GREGARIOUS" 68' 2007 VIKING SF
 Upgraded 2400hp MTUs (a \$500K option!), \$160K AME electronics pkg., the only one w/satin finished raised panel doors & so much more!! MUST SEE!



"SHARK BYTE" 68' 2007 VIKING SF
 16V2000s. AMAZING TOURNAMENT HISTORY! LOADS OF CUSTOM FEATURES & UPGRADES!
See full specs & photos at hmy.com



"LADY IRENE" 68' 2006 VIKING SF
 1825hp C-32A CATs w/extended warranty coverage. Palm Beach Towers tuna tower, chipper, H2O maker, dual gen set, extensive electronics, custom interior layout, teak cockpit, underwater lights & exhaust & more!



"FOREVER SUMMER" 68' 2003 VIKING SPORT CRUISER
 1300hp MANS, dinghy/ low profile davit, custom Bimini top, Eskimo, 1,700GPD H2O maker & more!
See full specs & photos at hmy.com



68' 2001 VIKING SPORT CRUISER
 1300hp MANS, Bose Home Theater upgrade, flat screen TVs throughout, SAT TV & phone, beautifully decorated & well equipped!
See full specs & photos at hmy.com



"MAGIC LADY" 65' 2005 VIKING ENCL. BRIDGE
 16V2000s, UPGRADES & CUSTOM TOUCHES THROUGHOUT! THE LAST 65' BUILT! DON'T MISS THIS EXQUISITE OFFERING!
See full specs & photos at hmy.com



"GAME ON" 65' 2004 VIKING CONV.
 16V2000s, mezzanine, 4 stateroom layout w/premium decor pkg. & granite throughout, SAT TV/radio, thruster, Eskimo, 2 gens & more!



"HOOLEYGAN" 65' 2003 VIKING ENCL. BRIDGE
 16V2000s, mezzanine, prop pockets, interior stairwell, premium decor pkg. Northstar & Furuno electronics, twin gens., NEVER FISHED!



"TAZ III" 65' 2003 VIKING SPORT CRUISER
 1050hp MANS. EXTENSIVELY EQUIPPED WITH ALL THE BEST! TOO MANY UPGRADES & UPDATES TO LIST! SUPERB!



"YELLOW BIRD" 2003 65' VIKING CONV.
 2000hp MTUs w/600 hours under warranty, 4 staterooms, mezzanine, chipper, watermaker, cockpit grill and more!
PRICE REDUCED!



"MARLENA" 65' 2002 VIKING CONV.
 16V2000s w/extended warranty thru 4/2010 or 2,000 hours, 4 stateroom layout, Marquipt davit w/17' Nautica tender w/60hp Yamaha 4 stroke!



"REEL'N & DEAL'N" 65' 2002 VIKING CONV.
 1800hp MTUs with 1,800 hours, mezzanine, 4 stateroom/4 head layout. MINT CONDITION!
See full specs & photos at hmy.com



"MIRAGE" 65' 2001 VIKING ENCL. BRIDGE
 C-32 ACERT CATs (2007), 4 stateroom layout, EXTENSIVE REFIT IN 2008, MANY CUSTOM TOUCHES THROUGHOUT!



"VAVO GINA" 65' 2001 VIKING SPORT CRUISER
 1050hp MANS, swim platform, tastefully decorated. WELL EQUIPPED! MA Location.
See full specs & photos at hmy.com



"REEL CAJUN" 65' 2000 VIKING ENCL. BRIDGE
 Upgraded 16V2000s, 4 stateroom layout with VIP forward, EXTENSIVELY CUSTOMIZED & EQUIPPED WITH NUMEROUS UPGRADES!



"BANK HOLIDAY" 61' 2007 VIKING SPORT CRUISER
 1100hp MANS, 3 stateroom layout. Bow & stern thruster. MINT CONDITION THROUGHOUT!
See full specs & photos at hmy.com



"CHIP'S AHOY" 61' 2007 VIKING SPORT CRUISER
 1100hp MANS, 3 stateroom layout. Bow & stern thruster. NO EXPENSE SPARED!



"TIGHTLINE" 61' 2005 VIKING SF
 C32 CATs, three stateroom/three head/galley-up layout, mezzanine, MANY CUSTOM TOUCHES THROUGHOUT!



MIAMI 305-856-8486
FT LAUDERDALE 954-926-0400
N PALM BEACH 561-799-9590
PALM BEACH 561-775-6000
STUART 772-692-7900
JACKSONVILLE 904-221-2228
CHARLESTON 843-577-3470

BROKERAGE VIKING YACHTS & VIKING SPORT CRUISERS



"THE THREE G'S" 61' 2005 VIKING CONV.
 C-32 CATs with extended warranty, 3 stateroom layout, teak cockpit with mezzanine, SUPERBLY OUTFITTED!



"CELL N OUT" 61' 2005 VIKING SPORT CRUISER
 1050hp MANs, bow & stern thruster, 3 stateroom layout, extra refrigeration, concealed transom davit & more!



"PRIORITY" 61' 2003 VIKING ENCL. BRIDGE
 1480hp MTUs, dinghy/davit, LOADED WITH ELECTRONICS including NightVision, SAT TV, SAT phone & more!



"AT LAST" 61' 2003 VIKING SF
 Less than 650 original hours on 12V2000 MTUs, 3 stateroom/3 head layout. ELECTRONICS & EXTRAS GALORE!! A TRUE "10"!



"BLUE EAGLE" 61' 2001 VIKING SF
 12V2000s, 3 stateroom/3 head layout, PipeWelders full tower, TOO MANY UPDATES TO LIST! A STELLAR EXAMPLE OF A PRE-OWNED 61' VIKING!
See full specs & photos at hmy.com



"RELENTLESS" 61' 2000 VIKING SF
 12V2000s, 3 stateroom/3 head layout. NUMEROUS UPGRADES THROUGHOUT!
PRICE REDUCED!
See full specs & photos at hmy.com



"PRINCESS MICHELLE" 60' 1999 VIKING SY
 820hp MANs, thruster, exterior completely painted by American Custom Yachts in '08. PRISTINE!
See full specs & photos at hmy.com



"CANYON RUNNER" 58' 1997 VIKING SF
 1200hp MANs, tower, Eskimo, many recent interior updates. SHOWS LIKE A MUCH NEWER MODEL!



"ROYAL FORTUNE" 58' 1995 VIKING SF
 1200hp MANs, decorated by world famous IK Design, underwater lights, cameras, Marquipt davit & more!



"JUST CHILLIN" 57' 2006 VIKING SPORT CRUISER
 3406E CATs w/low hrs., 3 stateroom/2 head layout. SAT TV & radio, thruster, underwater lights. IMMACULATE!
See full specs & photos at hmy.com



"PETUNIA" 56' 2007 VIKING CONV.
 1520hp M-91 MTUs w/extended warranties, 3 stateroom/2 head layout, BEAUTIFULLY DECORATED, PRISTINE!



"FAITHFUL" 56' 2006 VIKING CONV.
 M93 MTUs, premier decor package, Novurania dinghy, davit, oval exhausts, FULLY CRUISE EQUIPPED! LIKE NEW!



"EARLY BITE" 56' 2006 VIKING
 12V2000s with 550 hours, 3 stateroom/2 head layout, premier edition decor pkg., underwater lights, Eskimo, oval exhaust, UPGRADES GALORE!



"TEDDY BEAR" 56' 2005 VIKING CONV.
 Upgraded 12V2000 MTUs w/extended service protection, Imron "Ice Blue" hull, mezzanine. TOO MANY OPTIONS & TOO MUCH EQUIPMENT TO LIST!



"JOANNA" 56' 2004 VIKING CONV.
 12V2000s, 3 stateroom/2 head layout, BEAUTIFULLY DECORATED, EXCEPTIONALLY CLEAN & WELL OUTFITTED!



"JUSTFORFUN" 55' 2003 VIKING SF
 BRAND NEW 1550hp Common Rail MANs w/balance of MAN warranty. Furuno equipment galore, LOADED WITH OPTIONS! OPEN CHECKBOOK MAINTENANCE!!



"SALTY DAWG III" 55' 2003 VIKING CONV.
 1300hp MANs, MAINTAINED & EQUIPPED WITH AN OPEN CHECKBOOK SINCE NEW!
See full specs & photos at hmy.com



"DORIAN B" 55' 2000 VIKING CONV.
 1200hp MANs, 3 stateroom layout, new carpet throughout, SAT TV, Eskimo and much more!
See full specs & photos at hmy.com



55' 2001 VIKING CONV.
 1300hp MANs, extra fuel, ice chipper, watermaker, SAT TV & phone, loaded with electronics & fishing gear! PROFESSIONALLY MAINTAINED!



"ALPHA WON" 55' 2001 VIKING SF
 1300hp MANs, 3 stateroom layout, JVC Home Theater pkg., PipeWelders tuna tower, custom paint job in '08. underwater lights, TOURNAMENT READY!

MIAMI 305-856-8486
FT LAUDERDALE 954-926-0400
N PALM BEACH 561-799-9590
PALM BEACH 561-775-6000
STUART 772-692-7900
JACKSONVILLE 904-221-2228
CHARLESTON 843-577-3470



BROKERAGE VIKING YACHTS & VIKING SPORT CRUISERS



"COYOTE" 55' 2000 VIKING SF
 1150hp MTUs, popular 3 stateroom/2 head/galley-up layout, dinghy/davit, recent paint. ALL THE BELLS & WHISTLES!



55' 2000 VIKING SF
 1300hp MANs, outfitted w/a video recording system which allows the full thrill of the catch to be recorded! LOADED WITH GEAR!



55' 1998 VIKING CONV.
 1150hp MTUs, 3 stateroom layout, davit (tender NOT included), new enclosure, CAPTAIN MAINTAINED, CONTINUOUSLY UPGRADED, SHOWS WELL!



"AFTER YOU" 55' 1999 VIKING CONV.
 1200hp MANs, totally customized for an extremely knowledgeable owner. NO EXPENSE SPARED!



"SOCIAL CALL" 54' 1997 VIKING SPORT YACHT
 820hp MANs. TRULY WELL CARED FOR BY KNOWLEDGEABLE OWNER! LOADED!



"PLAYIN' HOOKY" 53' 1990 VIKING CONV.
 Complete overhaul late 2006. 3 staterooms, SAT TV, teak deck & covering boards, 2 gens., pulpit & winch.



"AZUL" 52' 2007 VIKING SPORT YACHT
 1360hp Common Rail MANs, 2 stateroom/2 head layout, upgraded Bose entertainment pkg., BRISTOL THROUGHOUT!



"COLONEL" 52' 2007 VIKING EXPRESS
 1360hp Common Rail MANs, luxury edition decor pkg., WELL CARED FOR & EQUIPPED WITH EVERY AMENITY & CONVENIENCE!



"MUTUNA" 52' 2007 VIKING SF
 1360hp Common Rail MANs, 3 stateroom/2 head layout, NO EXPENSE HAS BEEN SPARED ON OUTFITTING OR MAINTENANCE!



"SALTY DOG" 52' 2006 VIKING CONV.
 Low hours on 1360hp Common Rail MANs, "Atlantic Blue" hull color, underwater lights. UPGRADES GALORE! ABSOLUTELY EXCEPTIONAL!



"RELENTLESS" 52' 2005 VIKING CONV.
 1300hp MANs, 3 stateroom/2 head layout, EQUIPPED WITH ALL BEST ELECTRONICS & FISHING GEAR!



"DR. HOOK" 52' 2005 VIKING CONV.
 1300hp MANs w/500 hrs., 3 stateroom/2 head layout w/luxury edition decor, MANY CUSTOM TOUCHES THROUGHOUT! SAT phone & SAT TV. PRISTINE! BRING OFFERS!



"SOUTHERN COMFORT" 52' 2002 VIKING SF
 1300hp MANs w/650 hrs. S.M.O.H., luxury edition decor, PipeWelders tower, custom helm pod. READY TO FISH!



"LAST RESORT" 50' 2005 VIKING SPORT CRUISER
 Volvo D-12s with low hours, beautiful high-gloss cherry wood interior, desirable 3 stateroom layout, NUMEROUS UPGRADES THROUGHOUT!



"INNOVATOR" 50' 2003 VIKING EXPRESS
 1050hp MANs, ELEGANTLY APPOINTED 2 stateroom/2 head layout. TOURNAMENT RIGGED & READY TO GO!



"FAR NIENTE" V50 2000 VIKING SPORT CRUISER
 610hp Volvos w/under 500 hours, 2 stateroom/2 head layout w/luxury edition decor. NICEST, BEST EQUIPPED V50 VSC ON THE MKT!



"MARY T" 50' 2001 VIKING CONV.
 1050hp MANs, 3 stateroom/2 head layout, undercounter refrigerator & freezer in galley, VERY CLEAN! ALL SERVICE UP TO DATE! SHOWS EXTREMELY WELL!



"TUG N TOW" 50' 1999 VIKING EXPRESS
 Fresh out of the paint shed and clean! 1050hp MANs w/2000 hour service recently completed. WELL EQUIPPED & READY TO GO!



"NEVER-E NUFF" 50' 1998 VIKING CONV.
 820hp MANs, 3 stateroom/2 head layout, NICE, CLEAN & SERIOUSLY FOR SALE! See full specs & photos at hmy.com



"WAR CHANT" 50' 1999 VIKING CONV.
 820hp MANs with low original hours, fresh interior & MANY UPDATES! See full specs & photos at hmy.com



MIAMI 305-856-8486
FT LAUDERDALE 954-926-0400
N PALM BEACH 561-799-9590
PALM BEACH 561-775-6000
STUART 772-692-7900
JACKSONVILLE 904-221-2228
CHARLESTON 843-577-3470

BROKERAGE VIKING YACHTS



"TOP NOTCH" 50' 1997 VIKING CONV.
 820hp MANs. EXTENSIVELY UPGRADED!
 METICULOUSLY MAINTAINED!
See full specs & photos at hmy.com



50' 1995 VIKING CONV.
 820hp MANs, 3 stateroom layout, NorthStar,
 Direct TV and more!
See full specs & photos at hmy.com



"TAKE FIVE" 50' 1995 VIKING CONV.
 820hp MANs, tuna tower, ALWAYS CAPTAIN
 MAINTAINED WITH AN OPEN CHECKBOOK!
 A TRUE "10"!
See full specs & photos at hmy.com



"CARP" 50' 1992 VIKING SF
 820hp MANs, CONTINUALLY UPDATED
 & UPGRADED! AMAZING INVENTORY LIST!
See full specs & photos at hmy.com



"PAOLA KAY" 48' 2004 VIKING CONV.
 825hp MTUs, EVERY OPTION YOU CAN
 THINK OF! READY TO FISH OR CRUISE!
See full specs & photos at hmy.com



"TRAUMA" 48' 2003 VIKING CONV.
 860hp MANs w/low hours, 3 stateroom/2
 head layout, SAT TV, NICE & CLEAN!
See full specs & photos at hmy.com



"REEL DESIRE" 47' 2001 VIKING CONV.
 800hp MANs, 2 stateroom/ 2 head,
 COMPLETELY OUTFITTED, UPDATED &
 MAINTAINED BY FULL TIME CAPT.
See full specs & photos at hmy.com



"CONSTANT CRAVING" 47' 1994 VIKING CONV.
 680hp MANs, EXTENSIVELY UPGRADED
 & UPDATED OVER THE LAST YEAR!
See full specs & photos at hmy.com



"WHITE FANG" 45' 2007 VIKING CONV.
 900hp Common Rail MANs w/ 200 hrs & extend-
 ed service protection, hardtop, watermaker,
 livewell, great electronics & more!



"THREE C'S" 45' 2006 VIKING EXPRESS
 900hp MANs, 2 stateroom layout, tastefully
 decorated, EXTENSIVELY EQUIPPED &
 CAPTAIN MAINTAINED!



"MAJJICK" 45' 2004 VIKING EXPRESS
 860hp MANs, PipeWelders tuna tower,
 Raymarine electronics package. MUST SEE!
See full specs & photos at hmy.com



"ENDLESS SUMMER" 45' 2003 VIKING EXP.
 800hp MANs with low hours,
 MINT CONDITION THROUGHOUT!
See full specs & photos at hmy.com



45' 2003 VIKING EXPRESS
 860hp MANs w/all service up to date, tower,
 pulpit/winch, custom chair pkg., helm deck
 A/C, desirable 2 stateroom layout,
 1 OWNER SINCE NEW!



"BROTHERS TWO CAN DO" 43' 1998 VIKING EXP.
 6V92DECS, WELL EQUIPPED,
 GREAT VALUE!
See full specs & photos at hmy.com



"SOUTHERN GLORY" 45' 1988 VIKING CONV.
 671TIBs, WELL MAINTAINED, USED MOSTLY
 FOR FAMILY CRUISING & LIGHT FISHING.
 EXCELLENT CONDITION! READY TO GO!



"SEAS THE DAY" 43' 1995 VIKING CONV.
 6V92s. MANY RECENT UPDATES: Raymarine
 Electronics package, new bottom paint in the Fall
 of '09 & more!
See full specs & photos at hmy.com

DID YOU KNOW?

HMY IS THE LEADING BROKERAGE IN THE U.S. FOR NEW & PRE-OWNED VIKING YACHT SALES!

IT'S TIME TO GET WITH THE LEADER!

Unsurpassed Luxury. Exquisite Craftsmanship. Inspired Performance. Outstanding Service.

At Viking Sport Cruisers, we are passionate about our commitment to delivering the best in performance cruising yachts; a passion that is reflected in the constant reinvestment in our company, the consistent evolution of our product line, and our dedication to the ownership experience of our customers.

As part of our uncompromising approach, every Viking Sport Cruiser model, from 42 to 130 feet, exhibits a distinctive blend of leading edge technology, refined styling with timeless appeal, and painstaking hand craftsmanship in a yacht that is both exhilarating to command and a pleasure to own.

We invite you to Discover the Difference at www.vikingsportcruisers.com



Express Yachts V42 V45 V52 V53 V56 V58 V62 V72 V78 V85

Flybridge Yachts 42 50 54 58

Motor Yachts 63 67 70 75 78 85 95 105 130

Visit Viking Sport Cruisers at the
2010 Miami Yacht & Brokerage Show
February 11 - 15, 2010
5000 Collins Avenue, Miami Beach



609-296-6000



MIAMI 305-856-8486
FT LAUDERDALE 954-926-0400
N PALM BEACH 561-799-9590
PALM BEACH 561-775-6000
STUART 772-692-7900
JACKSONVILLE 904-221-2228
CHARLESTON 843-577-3470



***HMY Yacht Sales is your source
 for new & pre-owned Riviera Yachts!***



51' RIVIERA FLYBRIDGE



48' RIVIERA OFFSHORE EXPRESS



3600 RIVIERA SPORT YACHT

NEW RIVIERA MODELS AVAILABLE IN STOCK OR FOR ORDER:

61 FLYBRIDGE • 5800 SPORT YACHT • 51 FLYBRIDGE • 5000 SPORT YACHT • 48 OFFSHORE EXPRESS
47 ENCLOSED BRIDGE • 47 FLYBRIDGE • 45 FLYBRIDGE • 41 FLYBRIDGE • 43 OFFSHORE EXPRESS - IPS
4400 SPORT YACHT - IPS • 37 FLYBRIDGE • 3600 SPORT YACHT

Visit www.hmy.com for additional information on new or pre-owned Riviera Yachts



60' 2006 ENCL. BRIDGE "KNOT ON DUTY"
 M93 MTUs, bow thruster, SAT TV, tastefully decorated, WELL CARED FOR!
SEE FULL SPECS & PHOTOS AT HMY.COM



51' 2008 RIVIERA ENCL. BRIDGE "LOURDES"
 C-18 CATs, light blue hull, custom 4-sided enclosure, teak toe rail. TOTALLY CUSTOMIZED AT GLASS TECH AT PURCHASE! TOO MANY OPTIONS & UPGRADES TO LIST!



TRIPLE IPS POWER!!

51' 2008 RIVIERA ENCL. BRIDGE
 RIGGED WITH ALL THE BEST IN SYSTEMS & ENGINE OPTIONS! Triple IPS power, VERY ECONOMICAL! ABSOLUTELY IMMACULATE!



48' 2004 RIVIERA ENCL. BRIDGE "SIR REEL"
 C-12 CATs, forward windows in salon, A/C bridge, LOADED WITH ELECTRONICS.
Also available: 48' 2003 ENCL. BRIDGE "KNOT TIDE" C-12 CATs, located in Rhode Island.



Stock Photo

47' 2006 RIVIERA FLYBRIDGE "DAMIAN I"
 825hp Series 60 MTUs with low hours, PRICED TO SELL!
SEE FULL SPECS & PHOTOS AT HMY.COM



47' 2006 RIVIERA "NAVIGATOR"
 825hp MTUs w/low hours, thruster. SAT TV/radio, custom EZ2CY, extra fuel tank, underwater lights & more.



47' 2005 RIVIERA FLYBRIDGE "SEAFOLK"
 C-12 CATs with low hours. TOO MANY UPGRADES TO LIST!!
SEE FULL SPECS & PHOTOS AT HMY.COM



42' 2005 RIVIERA FLYBRIDGE "CAPRICO"
 635hp QSM11s still under warranty, 2 stateroom//2 head with mid-level galley layout, KVH SAT TV, SAT radio, davit, (4) Ocean LED underwater lights.



42' 2004 RIVIERA CONV. "YAH MON"
 "YAH MON" was the 2004 Miami Boat Show boat so she's got it all! QSM11 Cummins, dinghy, underwater lights, SAT TV, electronics galore.



Stock Photo

40' 2007 RIVIERA "DAUNTLESS"
 Very low hours on upgraded C-9 CATs, Raymarine electronics pkg., MINT CONDITION!
SEE FULL SPECS & PHOTOS AT HMY.COM



40' 2002 RIVIERA "ENDLESS SUMMER"
 450hp Cummins, new underwater lights in '08 (4), A/C bridge, EZ2CY also new in '08. GREAT CONDITION WITH LOTS OF UPGRADES!



37' 2007 RIVIERA CONVERTIBLE
 380hp QSB Cummins, 2 staterooms w/luxurious interior. LOADED WITH ALL THE LATEST ELECTRONICS!
Also available: "MAZUR" 37' '06 w/380hp QSB Cummins, Furuno NavNet electronics & more!

www.hmy.com

VISIT HMY'S NEW MIAMI LOCATION!



HMY's new office is located at Grove Harbour Marina 2640 South Bayshore Drive in Coconut Grove and can be reached at: 305-856-8486 or via email: hmymia@hmy.com. The office staff consists of: salesmen Gary Macaluso and Mark Ross, Sales Manager, John D'Agostino, Broker Assistant, Nery Berkeley and Captain Albert Rodriguez.

Please stop by and visit us at our new office or give us a call: (305) 856-8486
www.hmy.com

For further information regarding HMY's new Miami office location, please contact: John D'Agostino at: (305) 856-8486 or email: jdagostino@HMY.com

SELECT LISTINGS & NEW BOAT INVENTORY FROM OUR NEW MIAMI OFFICE!



MODEL YEAR CLOSE OUT PRICE!

NEW 47' RIVIERA G2

Upgraded Series 60 MTUs, Onan gen., 3 stateroom/2 head layout w/upgraded interior.
SEE FULL SPECS & PHOTOS AT HMY.COM



NEW 46' VIKING CONVERTIBLE

1100hp C.R. MANs, 2 stateroom layout w/gloss finish throughout. AME Custom Electronics package & more!



NEW 3200 TIARA OPEN

Twin 8.1 Crusader gas engines, premium "Oyster Cove" interior, bow thruster & more!
SEE FULL SPECS & PHOTOS AT HMY.COM



"QUEEN MARA" 60' 2006 RIVIERA ENCL. BRIDGE 3412E CATs w/low hrs., 4 stateroom/3 head layout, thruster, underwater light & more!
EXTREMELY WELL CARED FOR & EQUIPPED!



"FISHIZZLE" 51' 2002 BERTRAM SF 1050hp MANs, 3/2 layout, MANY UPGRADES THROUGHOUT & ALL THE BEST ELECTRONICS THAT MONEY CAN BUY!



"WET DREAM II" 51' 2005 RIVIERA SF C-18 CATs, EXTENSIVELY UPGRADED! Fresh bottom paint, SAT TV added to fly-bridge, and much more! PRICED TO SELL!



"LEAN BACK" 47' 2007 RIVIERA SPORT YACHT C-12 CATs with low hours, extensive interior updates! EXCELLENT CONDITION!
SEE FULL SPECS & PHOTOS AT HMY.COM



"MONKEY OPERATION" 36' 2007 TIARA OPEN 380hp Cummins with low hours, PipeWelders tuna tower, underwater lights & more! WELL EQUIPPED & MAINTAINED!



GRAND BANKS YACHTS





hmy.com

**HMY YACHT SALES
AT HARBOUR TOWNE MARINA
DANIA/FT. LAUDERDALE, FL
(954) 926-0400
Email: hmyftl@hmy.com**



"LADY LI" 63' 1987 HATTERAS M/Y
12V71Ts, TASTEFULLY APPOINTED &
WELL KEPT! A PRISTINE EXAMPLE
FOR A HATTERAS OF THIS VINTAGE!
See full specs & photos at hmy.com



Not for sale or charter to US residents while in US waters.

"MY HONEY II" 62' 2008 SUNSEEKER
Low hours on 1100hp Common Rail MANs.
OUTFITTED WITH ALL THE BEST!
See full specs & photos at hmy.com



"MOONBEAM" 58' 1981 HATTERAS YACHTFISHERMAN
8V71Ts, 3 stateroom/ 3 head layout.
RECENTLY REFIT INSIDE & OUT!
See full specs & photos at hmy.com



"OBSESSION" 57' 2001 CARVER VOYAGER
Thruster, new LCD TVs, MANY UPGRADES!
VERY CLEAN & WELL MAINTAINED!
See full specs & photos at hmy.com



"KICKBACK" 55' 1984 HATTERAS SF
12V71Ts, 3 stateroom/3 head/galley up layout.
MANY RECENT UPGRADES! NICE & CLEAN!
See full specs & photos at hmy.com



"JUEL MARIE" 54' 2004 HATTERAS CONV.
C-30 CATs, 3 stateroom/2 head layout,
EXTENSIVE EQUIPMENT LIST! NICE & CLEAN!
See full specs & photos at hmy.com



"IRISH EYES" 54' 2001 OFFSHORE
Low hours on 450hp Cummins. OWNER
RELOCATION FORCES SALE!
EXCELLENT OPPORTUNITY!
See full specs & photos at hmy.com



"HAPPY HOUR" 54' 1995 HATTERAS CONV.
12V92s, 3 stateroom/3 head layout.
ORIGINALLY A HATTERAS DEMO!
MAINTAINED WITH OPEN CHECKBOOK!
TOO MANY UPDATES TO LIST!
See full specs & photos at hmy.com



"MORNING STAR" 54' 1993 PRESIDENT M/Y
6V92TAs, 3 stateroom layout, SAT TV/radio,
extra fuel, dinghy, MOSTLY FRESHWATER
KEPT & USED!
See full specs & photos at hmy.com



"GETTIN AWAY" 53' 1999 CARVER VOYAGER
450hp Cummins Diamond Series, EXTREMELY
CLEAN! MAINTAINED TO PERFECTION!
See full specs & photos at hmy.com



"MAIN EVENT" 53' 1978 HATTERAS SF
Completely updated & customized in 2003
including new 850hp 10 Cylinder MANs = 30
knots, tower, teak cockpit, livewells,
ONE OF A KIND!
See full specs & photos at hmy.com



"AFFINITY" 52' 1998 EGG HARBOR CONV.
767hp MTUs, davit/tender, chipper,
H2O maker, SAT TV.
See full specs & photos at hmy.com



"HOOKED UP" 52' 1987 HATTERAS SF
8V92TAs, 3 stateroom/2 head/galley-up
layout, TRULY TURN-KEY!
See full specs & photos at hmy.com



Factory Photo

"BRIEF RECESS" 50' 2000 POST CONV.
3406 CATs, underwater lights, Furuno
electronics package, SAT TV,
MANY RECENT UPDATES!
See full specs & photos at hmy.com



"INTUITION" 48' 2002 SEA RAY SEDAN BRIDGE
616hp QSM11 Cummins with 800 hours,
bridge A/C, hydraulic swim platform/tender lift,
bow thruster, SAT TV. IN GREAT SHAPE,
READY TO GO!
See full specs & photos at hmy.com



"GABABRI" 48' 2001 SEA RAY SEDAN BRIDGE
Low hours on C-12 CATs, 3 stateroom/2 head
layout, WELL CARED FOR & EQUIPPED!
See full specs & photos at hmy.com



"LEX SEA LO" 43' 2004 CABO FLYBRIDGE
C-12 CATs, underwater lights, new enclosure,
SAT TV & much more! A MUST SEE FOR
ANY CABO BUYER!
See full specs & photos at hmy.com



"A COUPLE MOORE" 42' 1998 POST CONV.
430hp Volvos w/900 hours, VERY CLEAN! ALWAYS
MAINTAINED WITH AN OPEN CHECKBOOK!
Owner will consider smaller vessel in trade.
See full specs & photos at hmy.com



"REEL ENCOUNTER" 41' 2006 LUHRS
QSM-11 Cummins, 1 stateroom layout,
WELL EQUIPPED TO FISH!
See full specs & photos at hmy.com



"LUCILLE" 36' 1973 HATTERAS EXP.
460hp Cummins, TOTALLY REFIT! TOO
MANY UPGRADES & UPDATES TO LIST!
AN ABSOLUTE MUST SEE!
See full specs & photos at hmy.com



**HMY YACHT SALES
AT HARBOUR POINT MARINA
NORTH PALM BEACH, FL
(561) 799-9590
Email: hmynpb@hmy.com**



"POPPY'S TOY" 65' 2004 OCEAN ODYSSEY
DDC 900hp, three stateroom layout, WELL
MAINTAINED & EQUIPPED!



"FLYBUOY" 56' 2001 OCEAN SS
1050hp MANs, 3 stateroom/3 head layout, Direct TV,
Sirius SAT radio, SAT phone & more!



"GETAWAY" 52' 2001 EGG HARBOR CONV.
800hp CATs, 3/2 layout,
EXTREMELY WELL EQUIPPED!



"WHAT WE DO" 52' 2003 OCEAN CONV
825hp Series 60 MTUs, 3 stateroom/3 head layout,
tastefully decorated & WELL EQUIPPED!



"WARRIOR" 50' 2001 HATTERAS CONV.
3406 CATs, new bottom paint in '09, beautifully
decorated, COMPLETELY LOADED!



"SUNRISE" 50' 2007 VIKING SPORT CRUISER
Upgraded 675hp Volvos w/low hours, high gloss
cherry interior, concealed transom davit. PRISTINE!



"LADY LU" 48' 1999 OCEAN CONVERTIBLE
660hp CATs w/150 hrs S.M.O.H., new teak cockpit,
new interior & MANY OTHER RECENT UPDATES!!
See full specs & photos at hmy.com



"SEACLUSION I" 45' 2006 MERIDIAN M/Y
380hp QSB Cummins, kower helm. LOADED WITH
NEARLY EVERY AVAILABLE OPTION!
See full specs & photos at hmy.com



"BLUE TANGO" 43' 2000 RIVIERA
660hp CATs, davit/Novurania hard bottom dinghy,
WELL EQUIPPED & CARED FOR!
See full specs & photos at hmy.com



"SUNDIVER" 40' 2006 RIVIERA FLYBRIDGE
490hp QSC Cummins. MINT CONDITION! OWNER
WILL CONSIDER ALL REASONABLE OFFERS!
See full specs & photos at hmy.com



"ANDIAMO II" 40' 2002 OCEAN EXP.
420hp CATs with low hours, UNIQUE 2 STATE-
ROOM LAYOUT. A/C bridge, WELL EQUIPPED
& MAINTAINED! READY TO FISH OR CRUISE!



40' 1998 OCEAN SS CONV.
420hp CATs with low hours, 2 stateroom/galley-
up layout, VERY WELL MAINTAINED, MANY
UPGRADES OVER THE LAST FEW YEARS!



GRAND BANKS YACHTS



Select Brokerage Cruising Yachts



"DA BUBBA" 99' 2005 HARGRAVE M/Y
C-30 CATs, beautifully kept, fully equipped, elegant decor pkg., TURN-KEY READY!
See full specs & photos at hmy.com
CALL JOHN STRADER 954-926-0400



"PRIME TIME" 88' 2000 NORDLUND
1100hp MANs, bow & stern hydraulic thruster, 4 stateroom/5 head layout, stabilized, twin Kohler gens and more.
See full specs & photos at hmy.com
CALL JAY JURGENS 954-926-0400



"ISLAND TYME" 75' 2000 GRAND ALASKAN M/Y
Dependable CAT power, dinghy/davit, gorgeous teak interior, huge fly-bridge; perfect for entertaining! SUPERB CONDITION THROUGHOUT!
See full specs & photos at hmy.com
CALL STEVE CONROY 772-692-7900



Not for sale or charter to US residents while in US waters.

"WIN WON" 73' 2006 HORIZON CPM/Y
Desirable C-30 CATs, 3 staterooms plus 4th crew or additional guest stateroom aft. TASTEFULLY DECORATED & WELL MAINTAINED!
See full specs & photos at hmy.com
CALL STEVE BARCSANSKY 561-775-6000



Not for sale or charter to US residents while in US waters.

"PLANET HAVEN" 72' 2006 SUNSEEKER PREDATOR
MCA Certification, upgraded 1550hp Common Rail MANs w/350 hrs., EXTENSIVELY UPGRADED & ABSOLUTELY LOADED!
See full specs & photos at hmy.com
CALL JACK ROBERTSON 772-692-7900



"DAYS OF INDULGENCE" 68' 2004 SEA RAY SUN SPORT
3412E CATs w/760 hours, custom built for her original and knowledgeable owner, EXTENSIVELY CUSTOMIZED!
RECENTLY SERVICED & READY TO GO!
CALL DAVE MEYER 561-775-6000



"FAX IT" 62' 1996 QUEENSHIP M/Y
Low hours on 767hp MTUs S.M.O.H., SAT TV & radio, beautifully decorated. WELL CARED FOR & EQUIPPED!
See full specs & photos at hmy.com
CALL JAY JURGENS 954-926-0400



"SHAZAM" 61' 1986 HATTERAS M/Y
12V71s, 2 gens., stabilizers, recent new interior, 3 stateroom/3 head layout, dinghy/davit. \$599K 82' slip in Jonathan's Landing also available for sale with the boat for a total price of \$924K
CALL TOM CRAIG 561-775-6000



"ALWAYS RIGHT" 60' 2007 SEA RAY
1100hp MANs, extended warranties, teak flooring, Brownie's third lung, bow & stern thrusters, underwater lights & more!
CALL CHRIS BARBONI 954-926-0400



"MONKEY BUSINESS" 58' 2005 OCEAN ALEXANDER M/Y
Low hours on C-12 CATs, elegantly appointment, DON'T MISS THIS LUXURIOUS CRUISING YACHT!
ONLY 58' OCEAN ALEXANDER IN FLORIDA!
CALL DAVE MEYER 561-775-6000



"DREAM CATCHER" 58' 1999 WESTBAY CPM/Y
800hp CATs, 3/2 layout w/custom honey oak woodwork throughout, hydraulic windlass, 14' Novurania tender. EXTENSIVELY EQUIPPED!
See full specs & photos at hmy.com
CALL MIKE MCCARTHY 772-692-7900



"GROWLER" 47' 2008 GRAND BANKS HERITAGE CLASSIC
C-9 CATs with low hours. THE ONLY 47' CLASSIC BROKERAGE BOAT AVAILABLE! BETTER THAN NEW!
See full specs & photos at hmy.com
CALL JULIE JACKSON 772-692-7900

**HMY YACHT SALES
AT SOVEREL HARBOUR MARINA
PALM BEACH GARDENS, FL
(561) 775-6000
Email: hmypb@hmy.com**



**Fully transferrable MTU
warranty through 9/2012!**

"MARLENA" 77' 2008 HATTERAS ENCL. BRIDGE
2400hp MTUs w/1,100 hrs. as of 1/10. Beautifully decorated 5 stateroom layout each w/en-suite head + upper level day head. This **FLAWLESS** Hatt also features a cockpit mezzanine, electronics galore & an Egrets Flats boat!



"TYKHE" 73' 2005 OCEAN SF
C-12 CATs, 14' Novurania tender w/60 hp Yamaha, cockpit mezzanine, FAR TOO MANY CUSTOMIZATIONS TO LIST
See full specs & photos at hmy.com



"BUD-N-DI" 70' 2000 HATTERAS ENCL. BRIDGE
16V2000s, tower, teak, high gloss interior, EXTENSIVE EQUIPMENT LIST! READY FOR FISHING, DIVING, CRUISING...WHATEVER!



"NINA MARIE" 70' 1999 HATTERAS ENCL. BRIDGE
16V2000 MTUs w/low hours, EVERY AMENITY IMAGINABLE! VERY CLEAN & WELL MAINTAINED!
See full specs & photos at hmy.com



"B-3" 65' 1988 DONZI SF
EXTENSIVELY UPDATED: 3412 CATs new in '02, fresh paint & interior in '06.
See full specs & photos at hmy.com



"LANE CHOICE" 65' 1996 HATTERAS CONV.
1692s, 27 knot cruise, 3 stateroom/3 head layout, new enclosure, new electronics, EXTRA CLEAN!



"BET A BUC" 62' 2002 OCEAN CONV.
3412E CATs, popular 3 cabin/3 head/galley-up layout. full laundry room. DON'T MISS THIS "YACHT CLUB" CLEAN, ONE-OWNER BOAT!
TRADES O.K.!



X-SALANT" 59' 2004 MARQUIS
Series 60 MTUs. TASTEFULLY DECORATED & WELL EQUIPPED!
See full specs & photos at hmy.com



"DUBIOUS DUO" 57' 2003 CARVER VOYAGER
Volvo D-12s, beautiful cherry wood interior, 3 stateroom layout, SAT TV, bow & stern thruster & more!
See full specs & photos at hmy.com



"MIMI" 57' 2004 OCEAN ODYSSEY
3406 CATs w/low hours. A SPACIOUS, NICELY EQUIPPED, ONE OWNER CRUISER THAT'S SERIOUSLY FOR SALE!



"CLAM DEALER" 56' 2001 OCEAN ENCL. BRIDGE SS
800hp CATs, 3 stateroom layout, SAT radio, MANY UPGRADES THROUGHOUT! READY TO FISH OR CRUISE!



"IN PURSUIT" 55' 2006 NEPTUNUS CABRIO
800hp CATs w/only 310 hours & CAT Platinum Coverage thru 11/2010. Popular 2 cabin layout. BEST CONDITION; BEST PRICE ANYWHERE!



"THE LADY VIKKI" 53' 1991 RICKY SCARBOROUGH
8V96TAs, 2/2 layout, FAR TOO MANY UPGRADES TO LIST! MUST SEE!
See full specs & photos at hmy.com



"PERSISTENCE" 53' 1995 VIKING CONV.
820hp MANs, 2 stateroom layout, FAR TOO MANY RECENT UPDATES TO LIST!!
See full specs & photos at hmy.com



"BANKER'S AWAY" 52' 1999 HATTERAS CPMY
800hp CATs, tastefully appointed interior, WELL EQUIPPED & MAINTAINED!
See full specs & photos at hmy.com



"SEA CLUSION" 5000 2001 CRUISERS
Low hours on 660hp CATs, 3/2 layout, tastefully decorated & well equipped!
See full specs & photos at hmy.com



"OLE" 50' 1998 POST CONVERTIBLE
One of few 50' Post Convertibles with 1050hp MANs! MAINTAINED BY FULL TIME CAPTAIN! Miami Beach location.



"BIG FIN" 50' 1997 POST CONV.
820hp MANs, 3 stateroom/2 head plan "A" layout, COMPLETELY TURN-KEY, LOADED WITH GEAR & TOTALLY UPDATED!



48' 2007 FOUNTAIN
Triple 480hp Cummins, 2 stateroom layout, swim platform. MANY SEMI-CUSTOM FOUNTAIN OPTIONS ADDED!



"REEL STEEL" 46' 2004 OCEAN
800hp CATs, 3 stateroom layout, SAT TV, MANY CUSTOM TOUCHES!
See full specs & photos at hmy.com





CUSTOM YACHT HEADQUARTERS



hmy.com



"BIG EASY" 78' 2000 GARLINGTON
16V2000s, VERY WELL
EQUIPPED & MAINTAINED!
See full specs & photos at hmy.com
CALL DAVE BERARD 772-692-7900



"BOOMER" 76' 2005 WHITCAR SF
16V2000s, navy blue hull, 4 staterooms/5
head /galley-up layout, cockpit mezzanine,
COMPLETELY LOADED W/ALL THE BEST!
CALL DAVE BERARD 772-692-7900



73' MILLER 2009 CUSTOM
Hull, house & bridge complete, equipped with
16V2000s. READY TO COMPLETE TO YOUR
SPECIFICATIONS! CALL TODAY!
CALL DAVE BERARD 772-692-7900



"BROTHER'S PRIDE" 64' 2008 CUSTOM SF
Powered w/FAST & ECONOMICAL C-32 CATS, nicely
appointed 3 stateroom/2 head layout, mezzanine,
LOADED WITH ALL THE BEST ELECTRONICS!
CALL DAVE MEYER 561-775-6000



"BIG GAME" 63' 2001 PAUL MANN CONV.
1300hp MANs, 3 stateroom/2 head layout, new teak
deck and EZZCY fall of '07, redundant systems,
ALL THE FINEST GEAR!
CALL MIKE BROWN 561-775-6000



63' 2008 VICEM CUSTOM SF
1550hp Common Rail MANs, mezzanine, 3
stateroom/5 head (1 is a day head in the cockpit)
layout, PipeWelders tuna tower & more!
CALL DAVE MEYER 561-775-6000



"LISA K" 62' 2001 ISLAND BOAT WORKS
3412 CATs, tuna tower, 3/3 layout, MANY EXTRAS
THROUGHOUT! ALL NEW UPDATES! A FAST, GREAT
RIDING & GOOD LOOKING CUSTOM BOAT!
CALL DAVE BERARD 772-692-7900



"SEA HUNT" 61' 2007 BILLY HOLTON CONV.
C-30 CATs w/very low hours & 5 year CAT
platinum warranty. GREAT RIDING, CUSTOM
BUILT BUILT BOAT WITH NO WAIT!
CALL MIKE BURKE 561-775-6000



"IRISH WAKE" 61' 1988 BUDDY DAVIS CONV.
12V92s, hydraulic davit, Novurania tender.
MANY RECENT UPDATES!
READY TO FISH OR CRUISE NOW!
CALL JEFF CREARY 954-926-0400



"THE BEAST" 61' 1989 BUDDY DAVIS CONV.
1150hp MTUs, EXTENSIVELY UPDATED!
UPGRADES GALORE!
See full specs & photos at hmy.com
CALL TOM CRAIG 561-775-6000



"JOYRIDE" 61' 2001 GARLINGTON CONV.
1200hp MANs w/low hours S.M.O.H.,
3 stateroom/3 head layout. TOO MANY
UPDATES TO LIST!
CALL BOB LUCAS 772-692-7900



"SPINDRIFT" 60' 1999 BLACKWELL CONV.
Dependable 3406E CATs, 3 stateroom/2 head
layout, BEAUTIFULLY APPOINTED!
See full specs & photos at hmy.com
CALL DOUG DONOHUE 954-926-0400



Photo by: Wright's Aerials 772-597-1027
wrightsaerials.com

"FONDANA" 60' 1998 RYCO SF
1350hp CATs help make for a FAST, ECONOMI-
CAL, FANTASTIC SEA BOAT! 3 stateroom/3 head
layout. TOO MANY RECENT UPDATES TO LIST!
CALL DAVE MEYER 561-775-6000



**OWNER MAY CONSIDER LARGE
SPORTFISHERMAN IN TRADE!**

"GOOMBAY" 58' 2002 RITCHIE HOWELL
A PERFECT BOAT FOR ANYONE SEEKING A LATE
MODEL, COLD MOLDED, PEDIGREE CUSTOM BOAT!
3406E CATs, teak decks, teak covering boards & more!
CALL DAVE MEYER 561-775-6000



"TITAN" 58' 2002 CUSTOM CAROLINA CONV.
800hp CATs, MAINTAINED WITH AN OPEN
CHECKBOOK POLICY! CONSTANTLY UPDATED!
See full specs & photos at hmy.com
CALL SCOTT RHEIN 772-692-7900



"PIPE DREAM" 57' 2004 DEAN JOHNSON CONV.
C-18 CATs, CUSTOM BUILT FOR HER CURRENT
OWNER/CAPTAIN. WELL EQUIPPED, FAST,
EFFICIENT & READY TO GO!
CALL TOM CRAIG 561-775-6000



"FIN CHASER" 57' 1999 ISLAND BOATWORKS
1000hp MANs, ice chipper, (2) gens.,
H20maker, 3 stateroom layout.
AWESOME RIDE!
CALL TIM GREDICK 843-577-3470



"DITCH DIGGER" 57' 1997 ISLAND BOAT WORKS
1300hp MANs, beautiful 3 stateroom/2 head
interior. TRULY A FANTASTIC SEA BOAT!
LOADED & READY TO GO!
CALL DAVE MEYER 561-775-6000



SMALLER TRADES CONSIDERED!

"BLUE MAX" 55' 1991 WHITCAR ENCL. BRIDGE SF
1000hp MANs, great electronics, many recent updates,
Whitcar quality! SERIOUS SELLER!
See full specs & photos at hmy.com
CALL PAUL FLANNERY 772-692-7900



"SONRISA" 54' 1983 MERRITT SF
8V92DDECs with low hours. COMPLETELY
LOADED & REFIT! SHOWS AS A "10!"
See full specs & photos at hmy.com
CALL DAVE MEYER 561-775-6000

**DID YOU KNOW? HMY LISTS & SELLS MORE CUSTOM YACHTS THAN ANY OTHER FIRM!
CALL US TODAY FOR A MARKET ANALYSIS OF YOUR CUSTOM YACHT.**

CUSTOM YACHT HEADQUARTERS



"BONE SHAKER" 54' 1993 MARK WILLIS
QSM11 Cummins, 2 stateroom/2 head layout. GREAT TOURNAMENT HISTORY!
See full specs & photos at hmy.com
CALL DAVE BERARD 772-692-7900



"AMNESIA" 54' 1996 DONZI SF
1050hp MANs, tuna tower, Palm Beach control pod with single lever controls. PRISTINE! READY TO FISH!
CALL SCOTT RHEIN 772-692-7900



"NO REGRETS" 54' 2005 VICEM SF
1050hp MANs, full tower, 3 stateroom/2 head layout, cold-molded mahogany planked hull. A MUST SEE FOR ANY CUSTOM BOAT BUYER!
CALL DAVE MEYER 561-775-6000



"ORGANIZED CONFUSION" 53' 1990 FORBES
820hp MANs, GREAT RIDE WITH MANY RECENT UPDATES INCLUDING NEW INTERIOR & FRESH PAINT!
CALL TOM CRAIG 561-775-6000



"BOBO" 52' 2006 BUDDY DAVIS EXP.
1360hp Common Rail MANs with very low hours. teak cockpit, teak pod, toe rail and MANY CUSTOM TOUCHES! WELL EQUIPPED! READY TO FISH!
CALL JAY HENDRIX 561-775-6000



"CAN'T COMPLAIN" 50' 1981 RYBOVICH
New Detroit 8V92TAs in '01, 2 stateroom/2 head layout, teak cockpit, complete paint job in '03!
CALL TIM GREDICK 843-577-3470



"SHOVEL BOY" 48' 1981 MONTEREY SF
735hp Detroit, 2 stateroom/2 head layout, COMPLETELY REDONE!
See full specs & photos at hmy.com
CALL DAVE BERARD 772-692-7900



"COOKIE MONSTER" 48' 1989 RYBOVICH SF
8V92s w/900 hrs S.M.O.H., 2007 Merritt paint job, Rybovich tower, helm & fighting chair.
See full specs & photos at hmy.com
CALL TIM GREDICK 843-577-3470



"LEGEND" 47' 1990 BUDDY DAVIS SF
Series 60 825hp Detroit, 2 stateroom/2 head/galley-down layout. PROVEN FISH RAISER & TOURNAMENT WINNER! COMPLETELY REDONE!
CALL JAY JURGENS 954-926-0400



"ADIOS" 46' 2008 GAMEFISHERMAN SF
QSM11 Cummins w/950 hrs, tuna tower, ALL THE BELLS & WHISTLES! Located in Costa Rica.
See full specs & photos at hmy.com
CALL JEFF CREARY 954-926-0400



"GAME BOY" 45' 2005 GAMEFISHERMAN
QSM11 Cummins, EXTREMELY WELL EQUIPPED & CARED FOR! THE ONLY 45' GAMEFISHERMAN FOR SALE TODAY!
CALL JEFF CREARY 954-926-0400



43' 1973 MERRITT SF
Cummins 450C, Northern Lights gen set., ice chipper, H2O maker, Furuno & Northstar electronics, Jack Hopewell tuna tower. LOADED!
See full specs & photos at hmy.com
CALL SCOTT RHEIN 772-692-7900



"SEA REITER" 40' 2002 KNOWLES
430hp Cummins, proven Knowles quality and seakeeping ability. EXTREMELY WELL CARED FOR! MUST SEE!
CALL DAVE BERARD 772-692-7900



36' 2008 BLACKWELL EXP.
Custom built 35' Blackwell hull. 32 knot cruise with Yanmars. TRULY BEAUTIFUL!
See full specs & photos at hmy.com
CALL DAVE BERARD 772-692-7900



"OFFSHORE ACCOUNT" 35' 2004 SHEARWATER EXP
Upgraded 440hp Yanmars, PipeWelders marlin tower, Furuno electronics galore! READY TO FISH & EQUIPPED TO DO JUST THAT!
CALL JIM BARBONI 561-799-9590



"ONE FIFTH" 34' 2009 JARRETT BAY WALKAROUND EXP
Triple 300hp Verados, custom Baush tower, generator, A/C, LOADED & ONE OF A KIND!
See full specs & photos at hmy.com
CALL JIM KELLY 954-926-0400



34' WILLIS 2009 CUSTOM OUTBOARD
NEW CONSTRUCTION!
ONE OF A KIND BEAUTY!
CALL FOR SPECIFICATIONS.
CALL DAVE BERARD 772-692-7900



"JOLLY ROGER" 34' 2003 GAMEFISHERMAN
Twin 330hp Yanmars with 535 hours, Bausch tower, EXTREMELY CLEAN!
See full specs & photos at hmy.com
CALL DAVE BERARD 772-692-7900



"BUSTIN THE BANKS" 34' 2006 B&D CENTER CONSOLE
(2) 4-Stroke 275hp Mercury Verados, A ONE OF A KIND CENTER CONSOLE PERFECT FOR FISHING OR CRUISING!
CALL TOM CRAIG 561-775-6000



31' 2007 BONAEDO BOATWORKS CUSTOM
250hp 4-stroke Yamahas w/125 hrs., Ocean LED underwater lights, Mapa Burl cabinets & MUCH MORE!
See full specs & photos at hmy.com
CALL DAVE MEYER 561-775-6000

**DID YOU KNOW? HMY LISTS & SELLS MORE CUSTOM YACHTS THAN ANY OTHER FIRM!
CALL US TODAY FOR A MARKET ANALYSIS OF YOUR CUSTOM YACHT.**



**HMY YACHT SALES
AT WATERWAY MARINA
STUART, FL
(772) 692-7900
Email: hmystu@hmy.com**

hmy.com



"REEL ESTATE" 61' 2006 MIKELSON YACHTFISHERMAN
C-18 CATs under warranty thru May 2011, WELL EQUIPPED WITH ALL THE AMENITIES! READY TO ???



"BELLA VITA" 60' 2003 HATTERAS CONV.
3412 CATs with very low original hours!! Beautifully decorated and WELL CARED FOR!



"WILD BOAR" 60' 1998 OCEAN SS
Only 60' Ocean on the market with the upgraded 3412 CATs, plan "A" layout. ALWAYS PROPERLY MAINTAINED & LOADED WITH UPGRADES!



"HOPELESS ASSET" 54' 2001 SEA RAY
3196 CATs, IMPECCABLY KEPT, CONTINUOUSLY UPGRADED WITH AN OPEN CHECKBOOK POLICY! TURN KEY!



"CABLE GUY" 52' 2003 OCEAN SS CONV.
Low hours Series 60 825hp MTUs, helm A/C, 4- sided enclosure, SAT TV & phone, excellent electronics pkg. & more!
See full specs & photos at hmy.com



"ADAGIO" 48' 2003 SELENE PILOTHOUSE M/Y
330hp Cummins, ORIGINAL OWNER! 2 stateroom/2 head layout, BRISTOL CONDITION! MANY CUSTOM FEATURES!
See full specs & photos at hmy.com



48' OCEAN CONVERTIBLES
"SEA LEVEL" 2003 Series 60
MTUs, CUSTOM TOUCHES GALORE!
"NORDIC STAR" 1998 660hp CATs, PRISTINE!
See full specs & photos at hmy.com



"REELIZE" 48' 1989 HATTERAS CONV.
QSM-11 Cummins (new in '04), Eskimo, no bow rail, light blue hull, underwater lights & more!
See full specs & photos at hmy.com



46' '06 SUNSEEKER PORTOFINO
C-7 ACERT CATs w/low hours, rich cherry interior, MANY CUSTOM TOUCHES THROUGHOUT!



"BIG HORSE" 46' 1995 BLACKFIN
An exceptional soft & dry ride! Custom built, 820hp MANs, ash interior. AN ABSOLUTE MUST SEE!



"MAYA" 45' 2001 CABO EXP.
800hp MANs, Palm Beach style helm console, MANY CUSTOM TOUCHES!



"MISS L" 45' 1998 CABO EXPRESS
Low hrs. on 3406E CATs, HighSeas tower, helm A/C, SAT TV, LOADED WITH ELECTRONICS! READY TO FISH!



43' CABO FLYBRIDGE
"MISS JOYCEE" 2003 800hp MANs, Carolina style helm pod. READY TO GO!
"KATHY TOO" 2005 Low hrs. on C12 CATs, MINT! Located in Cabo San Lucas, Mexico.



"BLACKSOX" 42' 2004 DUFFY CUSTOM SEDAN
A 3 YEAR BUILD PROJECT CAN BE YOURS WITHOUT THE WAIT! C-9 CATs w/only 91 hours, low profile davit, dinghy, etc...



"TOLERANCE" 43' 1985 POST CONV.
SAME OWNER FOR 14 YEARS!
671TIBs w/low hrs. S.M.O.H., bottom paint 2/09, CONTINUALLY UPDATED!



"AMBLING ALONGSIDE" 37' 2004 INTREPID
(3) 300hp HPDI Yamahas, underwater lights, underwater camera, bow thruster, Sea Star hydraulic steering. DON'T MISS OUT!



**HMY YACHT SALES
AT HARBORTOWN MARINA
JACKSONVILLE, FL
(904) 221-2228
Email: hmyjax@hmy.com**



YOUR NEW BOAT HEADQUARTERS IN NORTH FLORIDA FOR:



GRAND BANKS YACHTS



"NOKOSE" 63' 1987 HATTERAS CPM/Y
MANY RECENT UPDATES! VERY CLEAN!
See full specs & photos at hmy.com



"ISLANDER" 60' 2008 NOVATEC M/Y
Twin 715hp QSM11's, 3 staterooms, A/C
bridge, cherry, sundeck, thrusters, FACTORY
DEMO WITH FULL WARRANTIES!
ASK ABOUT SPECIAL PRICING!



"LA MER" 58' 1998 SUNSEEKER PREDATOR
800hp MANs with low hours. 3 staterooms.
Beautiful cherry interior, new electronics, flat
screen TVs throughout. MUST SEE!



"SEAFOLK" 47' 2005 RIVIERA FLYBRIDGE
C-12 CATs with low hours. TOO
MANY UPGRADES TO LIST!!
See full specs & photos at hmy.com



"DRIFT AWEIGH II" 44' 2005 CARVER CPM/Y
Twin 370hp Volvos, full electronics, SAT TV,
freshwater boat in Florida! NEW TO MARKET!



41' SEA RAY SUNDANCER "REEL MOODY"
3126 CATs. SUPER CLEAN!
See full specs & photos at hmy.com



"BEVY'S GOLIATH" 39' 2005 SILVERTON M/Y
358hp CATs with very low hours.
MAINTAINED BY A METICULOUS
OWNER! MUST SEE!



"HONEY HULL" 38' 2004 SILVERTON CONV.
Twin 370hp Cummins. LOTS OF UPGRADES!
READY TO FISH OR CRUISE!



"SEA MIST" 38' 2003 TIARA OPEN
480hp Cummins, Plan "B" interior, hardtop,
cruise rigged, excellent electronics,
See full specs & photos at hmy.com



"SEA DOODLE" 36' 2004 TIARA SOVRAN
Twin 480hp Cummins, blue hull,
LOTS OF UPGRADES!
PRICE REDUCED!



"REEL STRUCTURE" 35' 2004 CABO FLYBRIDGE
450hp CATs w/low hours, 2/1 layout, WELL
EQUIPPED & MAINTAINED! PROVEN
TOURNAMENT WINNER!



35' 2006 PROLINE EXPRESS
250hp Mercury Verados, blue hull, also
available with triple Verados & tower.
See full specs & photos at hmy.com



"DEJA VU" 34' 2005 FORMULA PC
NEW TO MARKET! PRISTINE CONDITION!
Twin 8.1 Horizon Mercuriser.



34' 2003 SEA VEE CENTER CONSOLE
Twin 315 Yanmars w/warranties thru 2010,
tower, trailer, TOURNAMENT WINNER!



"ROGER THAT" 33' 1988 BERTRAM CONV.
Repowered in 2002 w/330hp Cummins,
hardtop. TOURNAMENT EQUIPPED!
LIFT KEPT!



"NO BARKIN" 31' 1996 CABO EXP.
Twin CATs, tower, navy blue hull.
See full specs & photos at hmy.com



**HMY YACHT SALES
AT CHARLESTON CITY MARINA
CHARLESTON, SC
(843) 577-3470
Email: hmysc@hmy.com**

hmy.com

YOUR NEW BOAT HEADQUARTERS IN SOUTH CAROLINA FOR:



"TEMPTATION" 65' 1992 HATTERAS M/Y
870hp Detroit's w/400 hrs. S.M.O.H., new electronics, new hull & topside paint, new gen set, COMPLETE INTERIOR REFIT.



"BENTLEY'S BEST" 62' 2005 OCEAN ENCL. BRIDGE
C-32 CATs w/675 hours & warranty, teak cockpit, 4 stateroom layout, 2 gens., **TRADES CONSIDERED!**



"HEAVY IRON" 61' 2006 VIKING SF
C-32 1675hp CATs Viking premier edition decor, teak transom, mezzanine and more!



"WATER'S EDGE" 60' 2005 HATTERAS SF
C-32 CATs with warranty, new enclosure, teak deck, teak cockpit, BEAUTIFULLY MAINTAINED!



"EPIFANIA" 56' 1997 VIKING SPORT CRUISER
2003 3196 CAT engines w/300 hrs., new enclosure, 3 stateroom/2 head layout, bow & stern thruster. LIGHTLY USED & WELL MAINTAINED!



"GAME ON" 55' 2001 HATTERAS CONV.
3412 CATs, up-to-date on CAT service, top side painted Dec. '08, ice chipper, SAT TV, MANY RECENT UPDATES!



"BELLAIR" 50' 1990 VIKING M/Y
8V92s w/only 80 hours S.M.O.H., very spacious 4 stateroom/3 head layout, dinghy/davit.



"BAIT SHAKER" 48' 1998 OCEAN EXP.
3406 CATs, 2 stateroom layout, teak cockpit & helm deck, EZ2CY enclosure.



"REECESS" 46' 2002 SEA RAY SUNDANCER
Only 325 hrs. on 450hp Cummins, flat screens throughout, color electronics, hardtop, PROFESSIONALLY MAINTAINED!
PRICE REDUCED!



"SEAS THE DAY" 44' 2008 SEDAN BRIDGE
Cummins power w/35 hours & warranty, Raymarine E120, Sea Ray Navigator, cherry interior & more!



"OUT OF CONTROL" 40' 2002 RIVIERA
Upgraded 535hp QSM11 Cummins, new flybridge enclosure, Raymarine electronics package.



"IRISH ROVER" 39' 2005 SEA RAY M/Y
Reliable Cummins power, full Raymarine electronics pkg., OWNER SAYS SELL!



"AMIGOS LOCOS" 38' 2006 RAMPAGE EXP.
575hp CATs w/warranty, twin Raymarine 120's, Release launcher, helm chair and more!



"RISK REWARD" 36' 2005 SEA RAY
Rare 425 Merc. high output engines, Raymarine electronics, color radar chart plotter, cherry interior, SPOTLESS!



"FISH CAB" 35' 2007 CABO EXP.
QSC 8.3 540hp Cummins, PipeWelders tower, helm A/C, Raymarine electronics pkg. and more!



"MUTUAL FUN" 25' 2005 ROSBOROUGH
Single 250hp Yamaha, generator, inverter, SAT TV, dinghy/davit, 1 stateroom/1 head, GREAT CRUISING VESSEL!

Specializing in Yacht Carpet Care!



Martin County:
(561) 747-1772

Broward & Palm Beach:
(561) 734-6911

Who has the best sportfishing fleet? HMY Yacht Sales, of course!

We offer a fleet of high performance convertible and express sportfishing yachts ranging from 30' to 82', as well as a wide selection of brokerage yachts.

***CALL AN OFFICE NEAR YOU OR VISIT US ON THE WEB:
www.hmy.com***

HMY Yacht Sales Locations:

**NEW MIAMI LOCATION!: 305-856-8486 • Dania/Ft. Lauderdale 954-926-0400
North Palm Beach 561-799-9590 • Palm Beach Gardens 561-775-6000
Stuart 772-692-7900 • Jacksonville 904-221-2228 • Charleston, SC 843-577-3470**

HMY YACHT SALES

SALES TEAM



Jim Barboni
Sales
North Palm Beach



Chris Barboni
Sales
Dania/Ft. Lauderdale



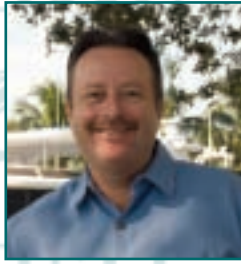
Steve Barcsansky
Sales
Palm Beach



Dave Berard
Sales
Stuart



Mike Brown
Sales
Palm Beach



Mike Burke
Sales
Palm Beach



Larry Caldwell
Sales
Jacksonville



Steve Conroy
Sales
Stuart



Jeff Creary
Sales
Miami



Tom Craig
Sales
Palm Beach



Doug Donohue
Sales
Dania/Ft. Lauderdale



Ian Edmonson
Sales
Jacksonville



Rob Everton
Sales
Charleston, SC



Paul Flannery
Sales
Stuart



Gigi Garcia
Sales
Dania/Ft. Lauderdale



Tim Gredick
Sales
Charleston, SC



John Haucke
Sales
Dania/Ft. Lauderdale



Jay Hendrix
Sales
Palm Beach



George Ivey
Sales
Jacksonville



Julee Jackson
Sales
Stuart



Jay Jurgens
Sales
Dania/Ft. Lauderdale



Jim Kelly
Sales
Dania/Ft. Lauderdale



Pat Kelly
Sales
Palm Beach



Bob Lucas
Sales
Stuart



Gary Macaluso
Sales
Miami

HIMY YACHT SALES

SALES & SUPPORT TEAM



Tony Maggio
Sales
Palm Beach



Peter Markatos
Sales
North Palm Beach



Spencer Markatos
Sales
North Palm Beach



Mike McCarthy
Sales
Stuart



Dave Meyer
Sales
Palm Beach



Brian Nopper
Sales
Dania/Ft. Lauderdale



Michele Renick
Sales
Dania/Ft. Lauderdale



Scott Rhein
Sales
Stuart



Jack Robertson
Sales
Stuart



Mark Ross
Sales
Miami



John Strader
Sales
Dania/Ft. Lauderdale



Mike Strassel
Sales
Dania/Ft. Lauderdale



Dave Thorpe
Sales
Palm Beach

SUPPORT TEAM



John D'Agostino
Sales Manager



Courtney Ackerman
Sales Assistant
Charleston, SC



Nery Berkeley
Sales Assistant
Miami



Charles Clark
Photography/IT
Coordinator



Julio DeCastro
Marketing
Manager



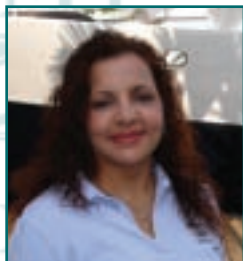
Jamie Feeley
Sales Assistant
Palm Beach



Carmela Ferreira
Sales Assistant
Dania/Ft. Lauderdale



Laura Hogle
Office Manager



Elena Knight
Accounting Assistant
Dania/Ft. Lauderdale



Mike Middleton
New Product Mgr.
Dania/Ft. Lauderdale



Susie Morales
New Product Coordinator
Dania/Ft. Lauderdale

HMY YACHT SALES SUPPORT TEAM



Christy O'Grady
Sales Assistant
North Palm Beach



Marybeth Probst
Sales Assistant
Stuart



Tom Sanders
Sales Manager



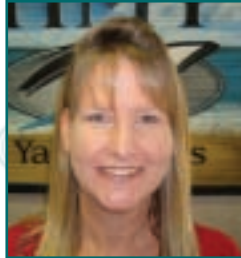
Joy Stafford
Sales Assistant
Dania/Ft. Lauderdale



Anne Tacon
Advertising
Manager



Larry Thomas
VP/Chief Financial
Officer



Lori Watson
Sales Assistant
Jacksonville



Danielle Williams
Sales Assistant
Stuart



Cheryl Yager
Sales Assistant
Palm Beach

HMY's Service Team



Shown in photo from left to right front row 1st: Capt. Bill Baillie, Jimmy Wheelis, Capt. Steve Campbell, Capt. John Zybrowski and Jeff Halter.
Back row left to right: John Singh, June Russell, Devon Owen, Rick Dowsett, Lori Zuclich and Paul Reinke

Look for photos in our next issue of:

Captain Albert Rodriguez - Miami

Mark Mitchell - Sales - Dania/Ft. Lauderdale

HMY Yacht Sales Locations:

NEW MIAMI LOCATION!: 305-856-8486 • Dania/Ft. Lauderdale 954-926-0400

North Palm Beach 561-799-9590 • Palm Beach Gardens 561-775-6000

Stuart 772-692-7900 • Jacksonville 904-221-2228 • Charleston 843-577-3470

Learn more about our team on our website: www.hmy.com



WWW.GRANDSLAMTACKLE.COM



866-59-CATCH

Come see our full line of marine and fishing products. Everything you need from daily maintenance to the bite! We ship internationally, no matter where you are in the world, we can get you what you need

Visit Our Two South Florida Locations

261 N. Highway A1A Alt.
Jupiter, FL 33477
Phone (561) 746-0526
Fax (561) 746-0969

207 E Blue Heron Blvd.
Riviera Beach, FL 33404
Phone (561) 841-2848
Fax (561) 840-2139



Maritime Finance LLC

*Preferred
Financing*

arranged by

Jeff Johnson



Maritime also offers:

- Interest Only Programs
- No Income Verification (up to \$350K)
- Foreign Registry Financing
- US Coast Guard Documentation
 - Luxury RV Financing
 - Airplane Financing

Toll Free: 1-877-YachtLoan (1-877-922-4856)

Cell: (954) 465-8980 email: jeff.johnson@eyachtloan.com

301 S.E. 20th Street, Fort Lauderdale, FL 33316

eYachtLoan.com



WIN THE FIGHT

BLUEWATER CHAIRS | MANUFACTURERS OF FINE FISHING CHAIRS



Founded in 1988 in the heart of the yachting and sport fishing capital of the world, BLUEWATER CHAIRS has satisfied the needs of knowledgeable and successful anglers and major sport fishing tournament winners for years. From our hand picked and matched teak chairs to our lifetime structural guarantee, BLUEWATER CHAIRS makes the finest product in the business.

240 Southwest 33rd Court | Fort Lauderdale, Florida 33315
954.522.4238 | bluewaterchairs@aol.com | www.bluewaterchairs.com

2,3,4 and 5 Bedroom

Luxury Beachfront
Condominium Rentals

only **1 hour** from Florida
on American, Continental, Bahamasair or several reliable charters



Call Toll Free **800.563.0014**
in the Bahamas: 242.365.8500

“Best Beach in the Caribbean”
Caribbean Travel & Life Magazine

Bahama Beach Club
LUXURY CONDOMINIUMS
Treasure Cay, Abaco, Bahamas



www.BahamaBeachClub.com

THE KEYES COMPANY

LUXURY PORTFOLIO™

FINE PROPERTY COLLECTION

Faith Moynihan
561-718-4066
Fmoyn@aol.com

Kristine Briggs
561-214-0100
kristinebriggs@keyes.com

The Faith Moynihan Group

SPECIALIZING IN LUXURY, WATERFRONT & VACATION RESIDENCES IN SOUTH FLORIDA.



YACHT HARBOR ESTATES! Impressive Intracoastal home will accommodate casual to sizeable yacht! Main home offers over 5,000 A/C sq. ft w/formal living & dining rm, 2/2 guest home, 20 x 40 pool, tiki huts, tropical rock garden. QUIET LOCATION!



YOUR WISH COME TRUE IN HORSESHOE ACRES! Over 1.5 acres on a point lot located on neighborhood pond. Large Colonial home w/4 bedrooms, formal living & dining room, in-law or teen suite w/full kitchen & french doors leading to patio & pool. Oversized 2 car garage w/hobby or extra storage room. Gated community w/low yearly HOA & your 3 horses are welcome!



JUPITER! RARE POINT LOT W/OVER 325 SQ. FT. OF WATERFRONT! Stunning Custom home w/wall-to-wall granite flooring, chef grade kitchen, 2 master suites, over 5,100 A/C st. ft., panoramic window views from every room! Infinity pool, 2 boat lifts & 1 jet ski lift. Private cul-de-sac lot.



OLD PALM! Well appointed Serena model offers 4 bedrooms, 4 full & 2 half baths, over 4,000 A/C sq. ft, pool & spa! NO GOLF MEMBERSHIP REQUIRED! Old Palm is one of the finest golfing communities w/a Raymond Floyd Signature Golf Course & 66 acre practice range & \$25M clubhouse. Offered at \$1.295M



2700 NORTH OCEAN! Exceptional Singer Island Oceanfront Condo is ready for your decorator's touch. Resort unit with all the amenities from beachside infinite-edge lagoon pool, deck top pool, poolside grill, cinema style theater & 24 hour security to ensure your peace of mind! Never lived in! PRICED TO SELL!



THE MOORINGS AT LANTANA! Desirable Paradise Model w/direct marina views! 3/2, master w/private terrace, hardwood flooring, kitchen w/Italian cabinetry & granite. Great short sale opportunity! Also a FULLY UPGRADED 2/2 AVAILABLE! \$99K



ONE OF FOUR LOTS WITH WATER ON TWO SIDES! WIDE RIVER VIEWS FROM THE FRONT AND WIDE CANAL ON THE BACK OF THIS PREMIER READY TO BUILD LOT! 2 SETS OF HOME PLANS ARE AVAILABLE FROM 3,000 SQ. FT. YOU HAVE THE BOAT...NOW BUILD THE REST! \$1.295M



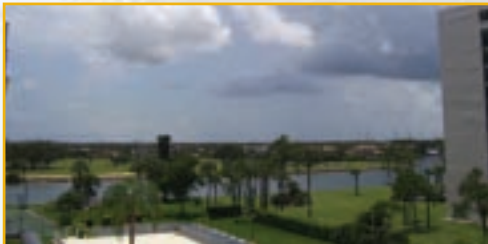
WELCOME TO COBBLESTONE OF PALM CITY! Stunning custom pool home features 4 bedrooms + den, 3 full baths & oversized 3 car garage. Over 3,300 A/C sq. ft. gourmet kitchen w/chef grade appliances, gas range, prep island & generous use of granite. PRICED UNDER MARKET AT \$550K



THE ISLES, PALM BEACH GARDENS! Lovely 3/2/2 + den. Lakefront home features hardwood floors, open floor plan & over 2,100 A/C sq. ft. Divosta community, Oakmont extended model in quiet location. \$475,000 DESIRABLE PALM BEACH GARDENS LOCATION!



JUPITER-PENNOCK POINT! Pool home w/detached guest house situated on over an acre of manicured grounds. RV & boat enthusiasts will enjoy the custom paved & 30 x 50 covered shelter w/independent electric. Amazing outdoor living with all the space you need for entertaining! Main home is updated, comfortable & spacious w/open floor plan. Quiet location, NO HOA!



GEMINI CONDO! THE PERFECT CONDO FOR GOLF & BOAT LOVERS! Very spacious 3/2, open floor plan, comfortable master w/large walk-in closet, 2nd & 3rd bedrooms share a Jack-n-Jill bath. Private balcony with water & community views. FOR SALE OR LEASE



MARINA GRANDE! BREATHTAKING INTRACOASTAL & OCEAN VIEWS FROM THE 22nd FLOOR! Largest unit with over 2,200 A/C sq. ft. & a 300 sq. ft. private terrace! MAKE YOUR OFFER TODAY! DEVELOPER UNITS AVAILABLE FROM THE MID \$200Ks

"Have Faith in Finding Your Dream Home!"

betterhomesandbeaches.com



PIRATE'S COVE RESORT & MARINA

EXPERIENCE OLD FLORIDA CHARM AND HOSPITALITY,
IT'S CLOSER THAN YOU THINK!



WELCOME TO THE SAILFISH CAPITAL OF THE WORLD!

SINCE 1990, PIRATE'S COVE HAS HOSTED THE *PIRATE'S COVE SAILFISH CLASSIC*.

In a prime location in the Manatee Pocket, Pirate's Cove offers a full-service marina with wet and dry slips, fuel, a fully-certified mechanic on duty, live bait, and a complete ship's store/gift shop and free covered parking.



Join us for a casual lunch or dinner at the Pirate's Loft Restaurant, where only the freshest seafood and finest steaks are served. Enjoy your meal with waterfront views in one of our two indoor dining rooms or on the covered deck. Weekends bring live music, drink specials, dancing and fun to the Pirate's Loft Lounge. Complimentary continental breakfast or room service is available for hotel guests. Our catering facilities provide an extensive array of choices that range from intimate events to gatherings of 400, private dinners to casual pool side parties, ensuring your unique event is unforgettable. We feature 50 guest rooms and mini-suites, all with private balconies and water views.

Pet friendly, smoking and ADA compliant rooms are available. Long term rates upon request.



4307 S.E. BAYVIEW ST. • STUART, FL • 772.287.2500 • www.piratescoveresort.com

195 EXIT 101 - FL 76 EAST - Right on Salerno - Left on A1A/Dixie - Right on SE Bayview
FL TURNPIKE EXIT 133 - FL 714/Stuart - Continue on SW Martin Downs Blvd/SW Monterey Rd - Right on A1A/Dixie - Left on SE Bayview

VIKING 57: ANOTHER BENCHMARK IN LEADING EDGE ENGINEERING
RECOGNIZED AROUND THE WORLD FOR QUALITY AND PERFORMANCE.

57 | DESIGNED FOR YOUR DISTINCTIVE LIFESTYLE



WWW.VIKINGYACHTS.COM

Proud Sponsor of



ROUTE 9, ON THE BASS RIVER - NEW GRETNA, NJ 08224 PHONE: 609.296.6000 FAX: 609-296-3956

earthtone

WELCOME TO EARTHTONE PRINTING. WELCOME TO SUSTAINABILITY.



Earthtone printing is the new sustainable practices initiative from Quality Printing Company. We're proud to be among the first sheet-fed printers in Indiana to achieve FSC (Forest Stewardship Council) certification and are happy to be able to provide responsible printing practices important to so many of our client partners. Quality Printing can provide you with FSC-certified papers, printed with soy-based inks, using some of the most energy-efficient, pollution-reducing pre-press and production systems in our industry.

OUR GROWING INITIATIVE.

Call us toll free at 800.771.1142 for more on our Earthtone sustainable practices initiative. Our customer support team has been trained to understand and explain the sustainable printing options available to you. No high-pressure tactics (or guilt-heaping!). Just a simple, straightforward discussion that will help us all move toward a more sustainable and mutually beneficial future.



The Global Benchmark for Responsible Forest Management

© 1996 Forest Stewardship Council A.C.
The FSC logo identifies products from well-managed forests.
SW-COC-002841

earthtoneprinting.com



QUALITY PRINTING COMPANY 1.800.771.1142 quality-printing.com

PROFESSIONALISM, EXPERIENCE & CLIENT SERVICE CHRISTI INSURANCE GROUP

CHRISTI MARINE

- ☆ Fast & efficient claims service ☆
- ☆ Unmatched knowledge & commitment to service ☆
- ☆ Special coverages to meet all your needs ☆
- ☆ Represent all the top marine insurance companies ☆
- ☆ Comprehensive coverages for yachts & boats at extremely competitive premiums ☆



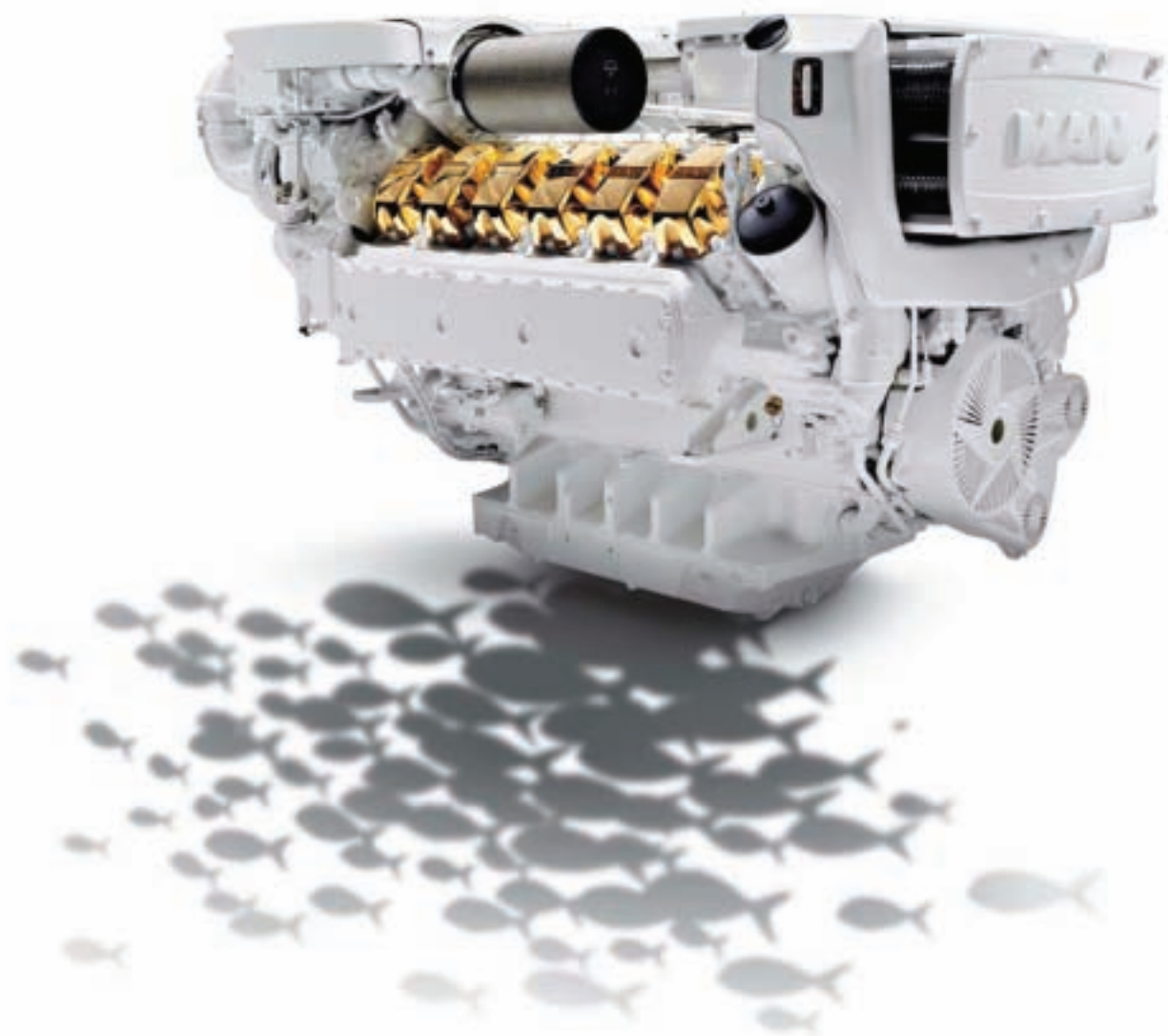
• 320 BICKLEY RD., GLENSIDE, PA 19038
• 156 STAGECOACH RD., MARMORA, NJ 08223
• 1113 FOXBOW COVE, LELAND, NC 28451
• 1550 AVENUE C, RIVIERA BEACH, FL 33404

• (215) 576-1250
• (609) 390-8996
• (910) 383-3765
• (561) 863-4401

• Fax: (215) 576-7292
• Fax: (609) 390-9144
• Fax: (910) 383-3766
• Fax: (561) 863-4450

www.christiinsurance.com

**Causing a stir at sea.
MAN V12-1800**



PUBLICIS

MAN engines. Fascination in hp.

MAN's marine engines are on the crest of the wave to success. Their superb dynamics, cultivated running and exemplary environmental compatibility are sure to convince you. As are their impressive power ratings from 730 hp to 1,800 hp. They get their luxury yachts planing fast and send their owners into raptures.

MAN Engines & Components Inc., 591 SW 13th Terrace, Pompano Beach, FL 33069

www.man-mec.com

Powered by MAN.

